

Sibelmed®

35 años
years



Elegant and innovative design



Assembled in less than 7 minutes



High level of sound absorption



10 standard models + special dimensions

S-PREMIUM

AUDIOMETRIC BOOTH

CE Class I

www.sibelmed.com

Feel the experience



S-PREMIUM · audiometric booth

FEEL THE EXPERIENCE

S-PREMIUM

The S-Premium audiometric booth from Sibelmed is a CE Class I medical device under directive 93/42/CEE, manufactured by SIBEL, S.A.U - SIBELMED, with a high level of acoustic insulation. Thanks to its elegant design and innovative assembly system, the S-PREMIUM booth can be used in a wide range of specialized fields: from ENT consultations or prevention services to optical shops and hearing-aid centers.



It has been designed with the highest quality new materials that are sustainable and free from harmful substances.

In addition, the S-PREMIUM is finished both inside and outside with washable panels.

Patented assembly system

Our revolutionary system, based on bricks, enables a quick and easy assembly without the need for specialized staff.

The booth structure does not require screws. It is based on a patented system of wooden connecting joints with a spring-mass system.

Universal Connection

The S-Premium booth is compatible with all audiometers on the market, thanks to a new universal connection system that allows up to 10 connections between the interior and exterior of the S-Premium booth (Jacks, USB, red..).

Lighting

Illumination without a switch; it is activated by a movement sensor, resulting in energy savings and offering the patient a comfortable and elegant light.



Elegant and innovative design



100% Washable



Glass door



Spacious effect



Easy to assemble



Without screws



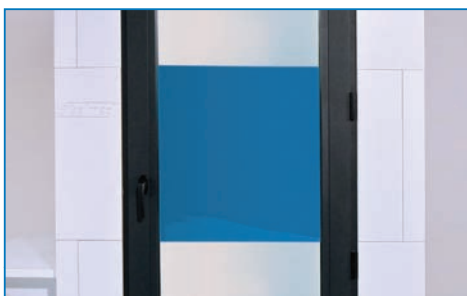
New universal connection system



Light with movement sensor



SIBELMED on YouTube: visit our channel and you will see the S-Premium booth assembled in less than 7 minutes.



Integrated absorbent panels



Reversible window



Patented system

S-PREMIUM · audiometric booth

MODELS AND OPTIONS

Regulations

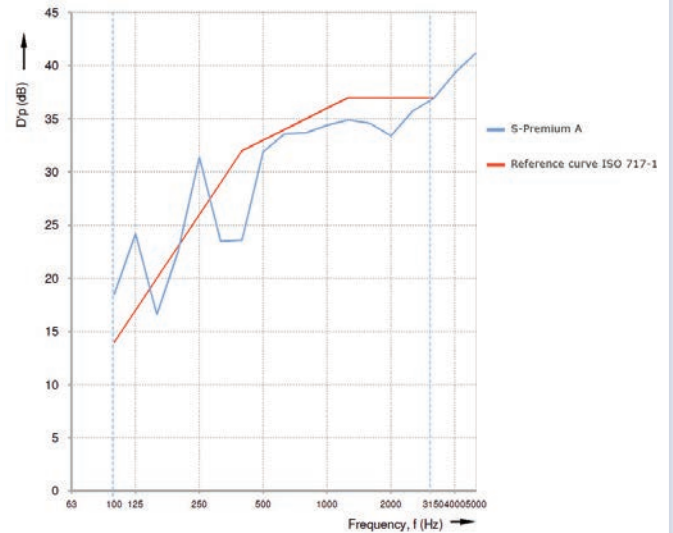
The S-PREMIUM booth is a CE Class I medical device under directive 93/42/CEE. It also complies with:

- EN 60601-1:2006+AC:2010+A1:2013
- EN 60601-1-6:2010
- EN 62366:2008
- EN ISO 14971:2012
- EN 1041:2008
- EN 980:2008
- ROHS II
- RAEE RD 208/2005 (España) (WEEE - Waste of Electrical and Electronic Equipment)

Enables compliance with the audiometry standards ISO 8253-1 and ANSI S3.1

The places dedicated to the practice of periodic hearing tests do not need to exceed the sound precision levels referred to in the standard EN ISO 8253-1:2010. Although it is always preferable to use an audiometric booth, where sufficient levels of acoustic insulation are achieved for a correct audiometric test.

Acoustic Insulation



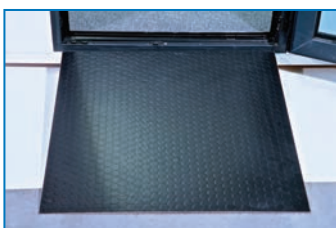
Test certified by SoundLab laboratory

Models

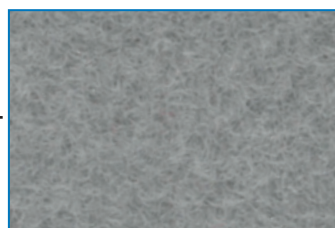
Dimensions (cm)	Exterior
Model A	129x129x212
Model B	138x106x222
Model C	198x168x222
Model D	198x198x222
Model E	228x198x222
Model F	228x228x222
Model G	258x228x222
Model H	258x258x222
Model I	288x258x222
Model J	288x288x222
Model K	special dimensions

Optional Modules

- Wheelchair access ramp for patients with reduced mobility (except model B)
- Floor with an easy-to-wash surface
- Forced ventilation, which improves ventilation in the booth
- Change in the door-opening direction



Access ramp



Washable floor



Silent forced ventilation



S-PREMIUM · audiometric booth

DESIGN AND INNOVATION

Technical specifications according to model

Model	A	B	C=>J
DIMENSIONS			
Door exterior (cm.)	82x200	75x210	92x210
Door interior (cm.)	71x189	63x179	81x199
Window (cm.)	82x60	60x60	41x60 => 90x90
CHARACTERISTICS			
10kHz (dB) attenuation	43.4dB	42.5dB	Check
5KHz (dB) attenuation	41dB	37dB	Check
Global attenuation (± 3 dB)	33dB	31dB	Check
Approx. weight.	500 Kg	500 Kg	770Kg => 1440Kg
Window	Double glazed with PVC frame.		
Door	Double glazed with PVC frame.		
Access ramps	74x74x10cm	No	84x74x10cm
Closing points	4 hinges and 7 anchor points		
Base	Silent blocks		
Exterior table (cm.)	Detachable 113x45x3		
Interior table (cm.)	Yes		
Exterior finish	Water-based varnish		
Interior finish	Water-based varnish + integrated absorbent panels		
Ventilation	Unforced ventilation system via labyrinth / Forced (optional)		
Interior illumination	LED light - 220V 50-60 Hz		
Board connections	Universal		
Preassembled free-field system	Yes		
Floor	Carpet / Washable floor (optional)		
Power supply	110-220 V 50-60 Hz		
Power	50W		



SIBEL S.A.U., Rosellón 500 bajos, 08026 BARCELONA (Spain)
 National Sales: Tel. +34 93 436 00 08 e-mail: comercial@sibelmed.com
 International Sales Office: Tel.+34 93 436 00 07 e-mail: export@sibelmed.com
 Technical Service: +34 93 433 54 50 e-mail: sat@sibelmed.com Fax: +34 93 436 16 11
 www.sibelmed.com



Svensk återförsäljare:
Entomed MedTech AB
 Storgatan 7
 233 31 Svedala
 040-48 11 40
 info@entomedmedtech.se
 www.entomedmedtech.se



ISO9001:2008

